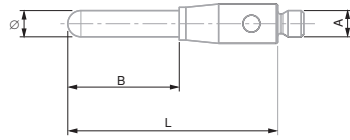


### Parallel Styli, M2 Thread

These styli are principally used for the measurement of threads.

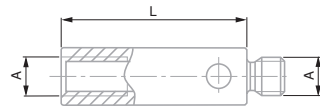


No	Rod	A mm	Ø mm	L mm	B mm	g
03969277	Carbide	M2	0,5	15,3	7,8	0,3
03969278	Carbide	M2	1	35,5	29,8	0,7
03969279	Carbide	M2	2	16	8,5	0,8
03969280	Carbide	M2	2	40	32	2
03969281	Carbide	M2	3	22,5	-	2

### Extension M2

The extension allows to enlarge the distance between the probe and the tip of the stylus in order to avoid collision in the depth measurement (e.g. bore).

The use of extensions can greatly reduce the accuracy of the measuring system.

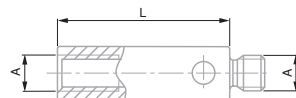


No	Extension	Rod	A mm	Ø mm	L mm	B mm	g
03969230	Extension, L5 mm	Inox	M2	3	5	-	-
03969231	Extension, L10 mm	Inox	M2	-	10	-	0,5
03969232	Extension, L20 mm	Inox	M2	-	20	-	1
03969233	Extension, L30 mm	Inox	M2	-	30	-	1,6
03969234	Extension, L40 mm	Inox	M2	3	40	-	1,8
03969238	Extension, L50 mm	Carbon	M2	3	50	-	1
03969239	Extension, L70 mm	Carbon	M2	3	70	-	1,3
03969240	Extension, L90 mm	Carbon	M2	3	90	-	1,5
03969246	Extension, L40 mm	Ceramic	M2	3	40	-	1,22
03969247	Extension, L50 mm	Ceramic	M2	3	50	-	1,51
03969270	Extension, L40 mm	Carbon	M2	3	40	-	0,9

### Extension M3

The extension allows to enlarge the distance between the probe and the tip of the stylus in order to avoid collision in the depth measurement (e.g. bore).

The use of extensions can greatly reduce the accuracy of the measuring system.



No	Extension	Rod	A mm	Ø mm	L mm	B mm	g
03969044	Extension, L10 mm	Inox	M3	-	10	-	0,8
03969045	Extension, L20 mm	Inox	M3	-	20	-	1,8
03969320	Extension, L35 mm	Inox	M3	-	35	-	2,9