

DATA-DIRECT Software

DATA-DIRECT software is an easy way to collect and report results in real time from the majority of the measuring instruments in the TESA range that have a data output.

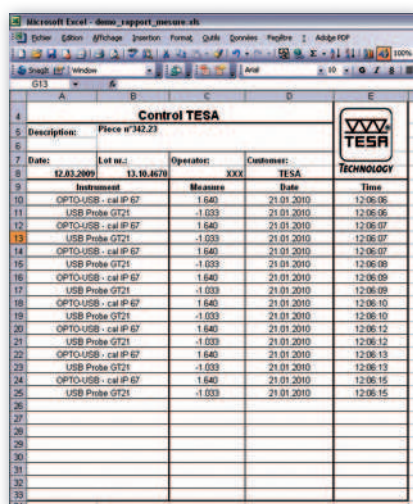
DATA-DIRECT is supplied not only with serial input/output drivers specially configured for TESA's products, but also for those purchased from other manufacturers. It works effectively to give data transfer for your data sheets, database, statistical modules or any other Windows-based applications.

With this user-friendly software you will be able to create your own reports for component inspection.

Minimum system requirements to run DATA-DIRECT:

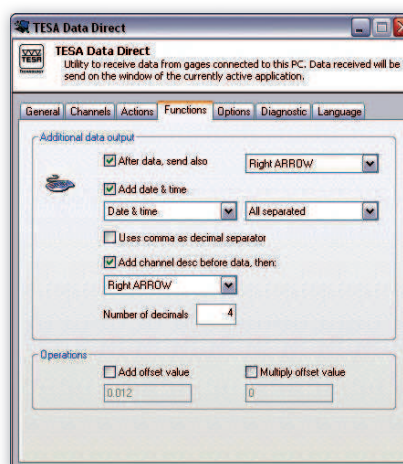
- Pentium 4 or equivalent
- 512 MB RAM (live memory)
- 10 GB HD
- Windows XP, Windows 7 (32 or 64 bits) or Windows 8 (32 or 64 bits)

Please contact your TESA representative or an authorised distributor for a 30-day demo version.

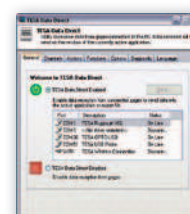


Control TESA				
Description: Piece n°342.23				
Date:	Lot no.:	Operator:	Customer:	
12.03.2009	13.10.0678	XXX	TESA	TECHNOLOGY
Instrument	Measure	Date	Time	
OPTO-USB - cal IP 67	1.640	21.01.2010	12:06:06	
USB Probe GT21	-1.033	21.01.2010	12:06:06	
OPTO-USB - cal IP 67	1.640	21.01.2010	12:06:07	
USB Probe GT21	-1.033	21.01.2010	12:06:07	
OPTO-USB - cal IP 67	1.640	21.01.2010	12:06:07	
USB Probe GT21	-1.033	21.01.2010	12:06:08	
OPTO-USB - cal IP 67	1.640	21.01.2010	12:06:09	
USB Probe GT21	-1.033	21.01.2010	12:06:09	
OPTO-USB - cal IP 67	1.640	21.01.2010	12:06:10	
USB Probe GT21	-1.033	21.01.2010	12:06:10	
OPTO-USB - cal IP 67	1.640	21.01.2010	12:06:12	
USB Probe GT21	-1.033	21.01.2010	12:06:12	
OPTO-USB - cal IP 67	1.640	21.01.2010	12:06:13	
USB Probe GT21	-1.033	21.01.2010	12:06:13	
OPTO-USB - cal IP 67	1.640	21.01.2010	12:06:15	
USB Probe GT21	-1.033	21.01.2010	12:06:15	

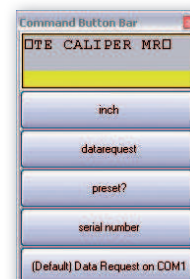
List of measured values within a third party software, e.g. MS Excel



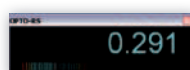
Tab function providing the facility to present the measured values



DATA-DIRECT: main window



Customisable tool bar



Real time display of the measured value in a separate window



04981001



DATA-DIRECT Software and dongle



Included in delivery

TESA DATA-DIRECT installation CD with licence key (dongle) USB and user instructions (PDF version)

TESA DATA-DIRECT Software	
TESA Instruments compatible with DATA-DIRECT	Opto-RS Cables – Opto-USB Cables – Height gauges (TESA-HITE, MICRO-HITE) – USB probes – Surface roughness gauges RUGOSURF 10 / 20 / 10G / 90G – TPS presetting bench – BPX probe interface – TWIN-STATION wireless probe interface – TESA wireless systems – TLC-TWIN wireless transceiver
Other instruments compatible with DATA-DIRECT	Custom made instruments with RS232 output – Instruments from other makers: Mitutoyo: DMX3 - DMX8 – Steinwald single 6 – Etc.
Functions	Export of results to .csv file – ASCII commands – Real time display of measured results on a PC (except for models using the Rf-USB receiver)

