



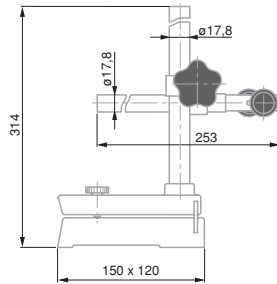





-  Cast iron table.
Chrome plated steel column
-  Support base:
Ground measuring face. 2 T-slots. Removable column.
-  Supplied without measuring instrument
-  Support base only: 4,85 kg
Measuring arm: 0,85 kg
Sliding arm: 1,75 kg


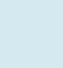
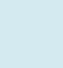
UA 30 MEASURING STAND

Base for mounting special fixtures adapted for series inspection

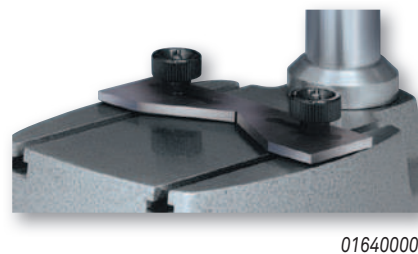
INTERAPID UA 30 Measuring Stand, Without Measuring Arm



No	=			
01639009	INTERAPID UA 30 measuring support with table, without measuring arm	0 ÷ 175	0 ÷ 6.89	125 x 115

-  Measuring arm 01610200: With fine adjustment. 1 mm travel. Ø 8 mm clamping bore.
-  Sliding arm 01610201: Sliding holder for TESA YA dial gauges. Adjustable swinging movement. Clamping bore Ø 13 mm. Length of travel 35, 57 or 80 mm.
-  Measuring span 60 mm. Depth stop plate 01640000: Dimensions: 115 x 35 x 3,5 mm. 120° vee recess for Ø ≤ 120 mm, 2 tightening screws.

Accessories for UA 30



No	=	
01610200	UK 20 measuring arm with fine adjustment for UA30 support	
01610201	UK 25 sliding arm. Used with TESA YA for stationary bore measurement on UA30 support	
01640000	UAZ 10 depth stop plate for UA 30	

