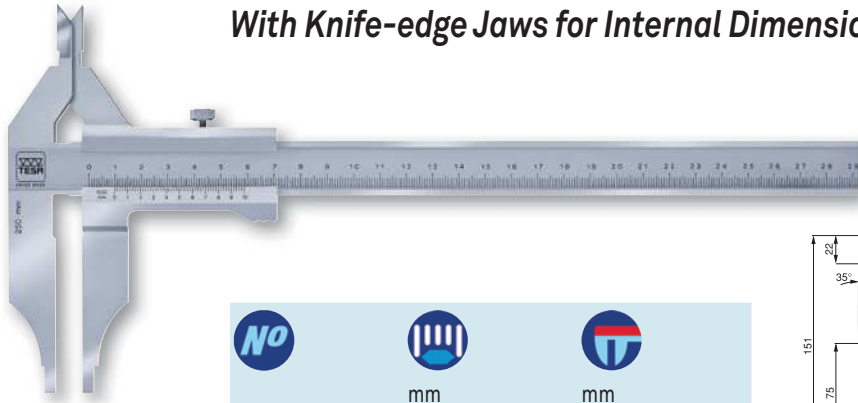
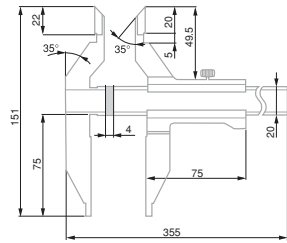


- DIN 862
(Style DN-2)
NFE 11-091
- Hardened stainless steel
- Inspection report with a declaration of conformity
- Satin-chrome scale background; main scale set back slightly for protection against wear

With Knife-edge Jaws for Internal Dimensions



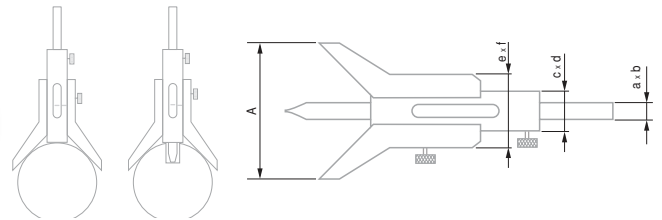
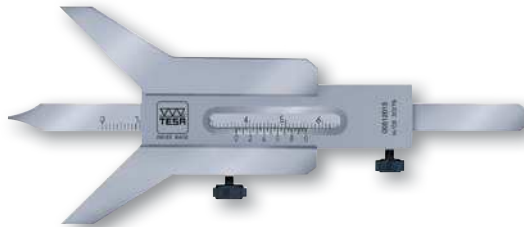
| | | |
|----------|---------------|------------|
| | | |
| 00510915 | mm 0 ÷ 250 | mm 0,02 |



- NFE 11-096
- Hardened stainless steel
- Inspection report with a declaration of conformity
- Satin-chrome scale background; main scale set back slightly for protection against wear

With Vee Bridge

Made to measure groove and slot depths on cylindrical shafts.

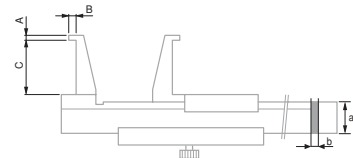
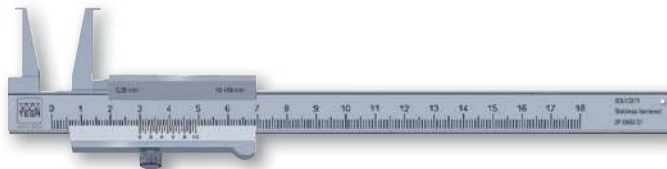


| No | | | | | | | | | | |
|----------|---------|------|------|------|------|------|------|------|------|--|
| | mm | mm | a mm | b mm | c mm | d mm | e mm | f mm | A mm | |
| 00512015 | 5 ÷ 80 | 0,05 | 8 | 2 | 18 | 5 | 32 | 10 | 60 | |
| 00512016 | 6 ÷ 120 | 0,05 | 8 | 2 | 18 | 5 | 34 | 10 | 90 | |
| 00512017 | 7 ÷ 160 | 0,05 | 10 | 2 | 21,5 | 5 | 42 | 10 | 120 | |

- Factory standard
- Hardened stainless steel
- Inspection report with a declaration of conformity
- Satin-chrome scale background; main scale set back slightly for protection against wear

For Turned Grooves

Specially designed for measuring groove or slot diameters, e.g. on safety rings.



| No | | | | | | | |
|----------|----------|------|------|------|------|------|------|
| | mm | mm | a mm | b mm | A mm | B mm | C mm |
| 00510371 | 10 ÷ 160 | 0,05 | 16 | 3 | 0,9 | 3 | 25 |
| 00510375 | 20 ÷ 160 | 0,05 | 16 | 3 | 2 | 5 | 40 |
| 00510383 | 26 ÷ 200 | 0,02 | 16 | 3 | 3 | 7 | 60 |
| 00510387 | 30 ÷ 250 | 0,02 | 20 | 4 | 4 | 8,5 | 80 |
| 00510393 | 35 ÷ 300 | 0,02 | 20 | 4 | 5 | 10 | 100 |

