

ETALON POLO HORIZONTAL MEASURING BENCH

A giant for small sizes – Specially designed for the control of measuring and test equipment in compliance with ISO 9000.

- Application range from 0 up to 100 mm for external dimensions of 2,5 up to 110 mm for internal dimensions – 50 mm measuring span.
- Resolution to 0,001 or 0,0001 mm – Metric/Inch conversion.
- Maximum permissible error of 0,5 μm .
- Measuring force from 0 to 4 N.
- Comes with a calibration certificate issued by the supplier.



Calibration of Standards:

- Cylindrical test pins
- Setting standards with cylindrical, plane-parallel measuring faces
- Threaded reference gauges (calibrated using the 3-wire method)
- Setting masters
- Setting rings

Workpiece Inspection:

External dimensions

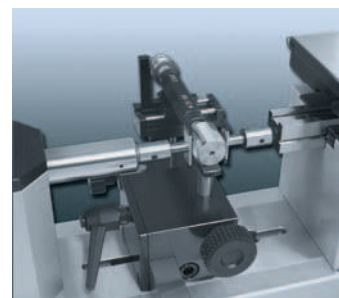
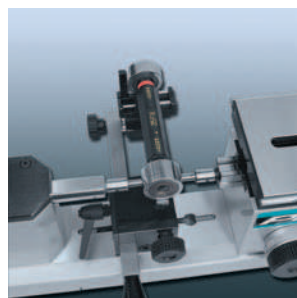
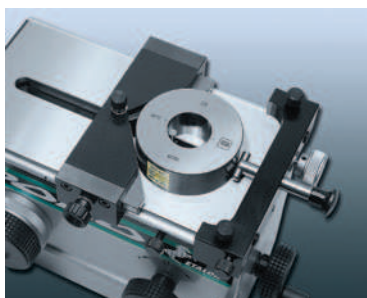
- Stepped shafts
- Cutting tools
- Cylindrical pins
- Ball tips
- Grooves
- Short centring shoulders
- Threads (measured according to the 3-wires method)

Internal dimensions

- Through bores
- Blind bores
- Centring grooves
- Slots
- Sliding guides


Calibration of Plus Gauges:


- Limit plug gauges
- Plug gauges "GO"
- Plug gauges "NO GO"
- Plain plug gauges
- Ring gauges "GO"
- Ring gauges "NO GO"
- Threaded plug gauges



 Max. perm. error within the measuring span: 0,5 µm with standard accessories


 0,1 µm


 Opto-electronic measuring system with incremental glass scale, type LIF - HEIDENHAIN

 Tilting range of the floating table ± 0,5°


 EN 50081-1
EN 50082-2
EN 61000-4-2
EN 61000-4-4

 Setting 0 to 4 N

 50 mm measuring span

 19 kg net (main part alone, without table). Floating table: 2,8 kg net

 8,0 • 10⁻⁵/°C

 • 0 to 100 mm for external dimensions
• 10 to 110 mm with standard accessories
• 2,5 to 110 mm with optional accessories

ETALON POLO with Floating Resting Table

Calibration of measuring instruments

- Dial Gauges
- Lever Dial Test Indicators
- Electronic transducers



No **=**

05939001 ETALON POLO measuring bench with floating table and electronic computing counter

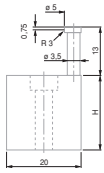
CONSISTING OF:

- 05919002** Main part
- 05969024** 1 pair of inserts for external dimensions
- 05969015** Floating measuring table
- 05969029** HEIDENHAIN computing counter ND 287

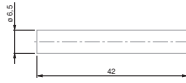
DELIVERED WITH THE FOLLOWING ACCESSORIES:

- 05969020** 1 Pair of standard inserts for internal dimensions from 10 mm
- 05969030** Protective cover





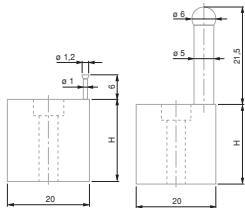
05969020



05969024

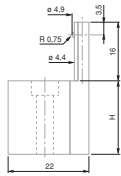
Pair of Standard Measuring Inserts for External and Internal Dimensions from 10 mm

No	=	Description
05969020		1 Pair of standard inserts for internal dimensions from 10 mm To be used with floating table N° 05960015, H = 20 mm
05969024		1 pair of inserts for external dimensions 6,5mm Ø carbide inserts with a flat face



05969021

05969022



05969023

Measuring Inserts for Internal Measurement used with the Floating Resting Table

Height H = 20 mm. M4 locking screw.

No	=	Description
05969021		Internal measuring inserts from 2,5 mm Barrel-shaped inserts with a 1,2 mm dia. carbide ball tip.
05969022		Internal measuring inserts from 13 mm Fitted with a 6 mm dia. carbide ball tip.
05969023		Internal measuring inserts from 5 mm Fitted with a 1,5 mm dia. carbide ball tip.



Bench Stand with Swivelling Plate

For raising the measuring bench from horizontal to vertical position. Accommodates a clamp lever. Length (upright): 295 mm, mass ≈ 20 kg.

No	=	Description
05969000		Bench stand with swivelling plate



Base for the Computing Counter

Base for raising up the HEIDENHAIN ND 287 counting unit, height 380 mm, weight 5,2 kg.

No	=	Description
05969001		Stand for computing counter

Floating Resting Table

Used for external measurement on oblong parts up to 60 mm in diameter; centres, L=160 mm; movable positioning fixture for parts having varying lengths, 3 freedom degrees.



No	=	Description
05969032		Resting table without vise
05969033		Vise for plug gauges
05969034		Floating table

Stands for Checking External Dimensions



No	=	Description
05969007		Ø 3 mm stand for external Ø
05969008		Ø 6 mm stand for external Ø

Stand with Ø 10 mm Fixing Bores

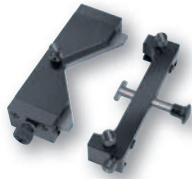
For H-shaped table (05969003) and for control system for lever-type indicator (05969004)



05969002 Stand with Ø 10 mm bore for 05969003 and 05969004

Centering Device

Allows the user to search for the transverse culmination point against the measuring direction. Used with either the fixed or floating table No. 05969014 or 05969015. Prismatic stop adjustable transversely, max. diameter 110 mm. Counter pressure piece finished with cylindrical stop pins.



05969012 Centering device for culmination point

Fixing Shank

For clamping the instruments that need to be calibrated such as dial gauges or precision indicators etc.



05969010 For fixing shafts with a Ø 8 mm
05969011 For fixing shafts with a Ø 3/8 in

Holder for a Dial Test Indicator (Lever-type)

Provided with 2 dovetail clamps, TESATAST-type or in compliance with BS 2795:1981



05969004 Holding device for test indicator

Spindle for Calibrating Dial Gauges, Dial Test Indicators and such like

Setting range = 50 mm, Spindle rotation = 0,5 mm



05969009 Spindle for calibrating dial gauges, dial test indicators and such like

