

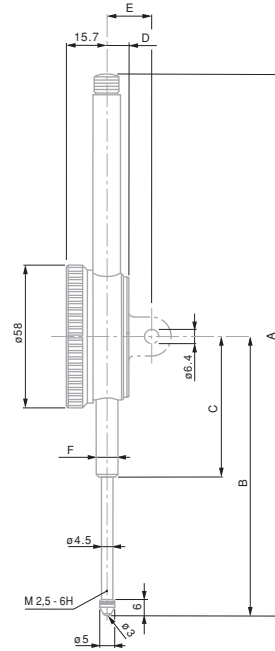
## Dial Ø 58 mm – Reading 0,01 mm – Long travel

Long range precision dial gauges

- EN ISO 463  
Factory standard
- Rotating dial. With  
or without dial lock.
- Full-metal dial  
casing. Mounting  
shank and plunger  
in hardened stain-  
less steel
- Adjustable tolerance  
markers. Thread  
M2,5 for measuring  
insert
- Measuring insert  
with 3 mm ball tip  
already mounted
- Inspection report  
with declaration of  
conformity



712



No	=									
		mm	mm	mm	mm	mm				
712	COMPAC 712	30	30,5	0,01	1	0 ÷ 50 ÷ 100	●	–	–	58
722	COMPAC 722	50	50,5	0,01	1	0 ÷ 50 ÷ 100	●	–	–	58
732	COMPAC 732	100	100,5	0,01	1	0 ÷ 50 ÷ 100	●	–	–	58

### Dimensions

mm	30 mm	50 mm	100 mm
A	148	228	390
B	88	117,2	211,6
C	50	60	103,6
D	10	9	9
E	20	19	19
F	Ø 8h6	Ø 8h6	Ø 8h6

### Permissible limits of a metrological characteristic (MPE/MPL)

	30 mm	50 mm	100 mm
Deviation span	20 µm	25 µm	30 µm
Total deviation span	25 µm	30 µm	35 µm
Repeatability limit	3 µm	3 µm	3 µm
Max. hysteresis	5 µm	5 µm	8 µm
Measuring force	≤ 2,2 N	≤ 2,5 N	≤ 3,2 N

