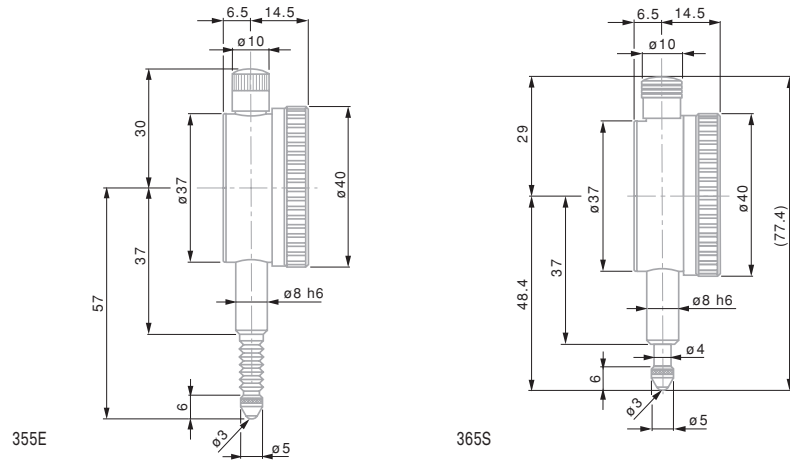


- EN ISO 463
Factory standard
- Rotating dial
- Full-metal casing.
Fixing shank and plunger in hardened stainless steel
- Adjustable tolerance markers. Thread M2,5 for measuring insert
- Measuring insert with $\varnothing 3$ mm ball tip already mounted
- Inspection report with declaration of conformity

Dial $\varnothing 40$ mm – Reading 0,002 mm

Precision dial gauges



| | mm | mm | mm | mm | | | | | | |
|-------------|-------|-----|-------|-----|-------------|---|---|----|-------|--|
| 355 | 3 | 3,3 | 0,002 | 0,2 | 0 ÷ 10 ÷ 20 | ● | - | 40 | | |
| 355E | 3 | 3,3 | 0,002 | 0,2 | 0 ÷ 10 ÷ 20 | ● | - | 40 | IP 54 | |
| 365S | ±0,08 | 1,5 | 0,002 | 0,2 | 8 ÷ 0 ÷ 8 | ● | - | 40 | | |

Permissible limits of a metrological characteristic (MPE/MPL)

| | ±0,08 mm | 3 mm |
|---|--------------|--------------------|
| Deviation span | 2 μ m | 10 μ m |
| Deviation span within the selected local measuring span 0,10 mm | 2 μ m | 6 μ m |
| Total deviation span | 4 μ m | 12 μ m |
| Repeatability limit | 1 μ m | 1,5 μ m |
| Max. hysteresis | 1 μ m | 2 μ m |
| Measuring force – Model IP54 | ≤ 1,4 N – | ≤ 1,4 N ≤ 1,7 N |

