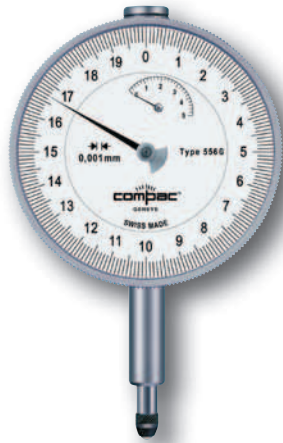


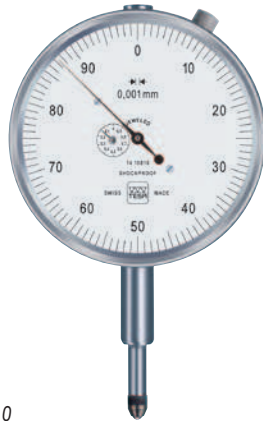
- EN ISO 463
Factory standard
- Rotating dial. With
or without dial lock.
- Full-metal dial cas-
ing. Stainless steel
fixing shank and
plunger, hardened
- High performance
anti-shock system
in both directions
- M2,5 thread for
measuring inserts
- Measuring insert
with Ø 3 mm ball
tip, already mounted
- Inspection report
with a declaration of
conformity

Dial Ø 82 mm – Reading 0,001 mm

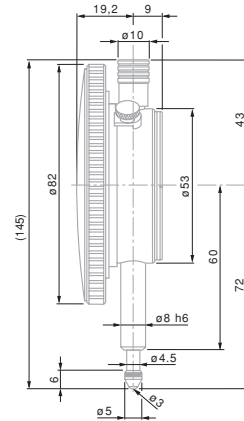
Precision dial gauges



556G



01410810



01410810

| | | | mm | mm | mm | mm | | | | |
|----------|-------------|--|----|-----|-------|-----|--------------|---|---|----|
| 01410810 | TESA YR | | 1 | 3,3 | 0,001 | 0,1 | 0 ÷ 50 ÷ 100 | ● | ● | 82 |
| 556G | COMPAC 556G | | 5 | 5,3 | 0,001 | 0,2 | 0 ÷ 10 ÷ 20 | ● | - | 82 |

Permissible limits in a metrological characteristic (MPE/MPL)

| | 1 mm | 5 mm |
|---|---------|---------|
| Deviation span | 4 µm | 12 µm |
| Deviation span within partial measuring span of 0,10 mm | 4 µm | - |
| Total deviation span | 5 µm | 14 µm |
| Repeatability limit | 1 µm | 2 µm |
| Max. hysteresis | 1 µm | 2 µm |
| Measuring force | ≤ 1,7 N | ≤ 1,5 N |

