

### TESA Spirit Inclinometer with Protractor and Micrometer Element

Enables the measurement of angular deviations in any position of a cylindrical or flat surface.

Instrument features: prismatic measuring face (shafts  $\varnothing$  17 to 80 mm) (DIN 877 + DIN 2276/1). Scale range:  $2 \times 180^\circ$ .

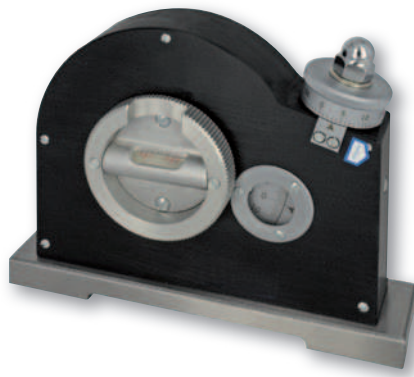
The adjustment is executed by disengaging the micrometer element by pressing in the direction indicated by the arrow. Afterwards the vial is oriented manually before engaging the micrometer element and executing the fine adjustment with the latter.

1 scale division = 1 degree.

1 division of the micrometer element = 1 Arcmin

Vial with sensitivity of 0,3 mm/m (= 1 Arcmin).

Error limit = 1,5 Arcmin



- DIN 877
- DIN 2276 part 1
- Flat measuring faces with v-shaped groove
- Hardened and ground steel base
- Longitudinal and cross vials
- 1,6 kg (without case)  
2,1 kg (with case)

No	=					
		Scale division of micrometer element	Scale division of level		For shafts $\varnothing$ , mm	mm
05331750	Spirit clinometer with angle protractor and micrometer element	1 Arcmin	1 Arcmin (0,30 mm/m)	$2 \times 180^\circ$	17 ÷ 80	150 x 35 x 116

