

**N** DIN 863 T4  
(Style C2)  
NFE 11-099

**000** 0,01 mm

**T** Tungsten carbide  
tipped measuring  
bolts and cone

**I** Inspection report  
with a declaration  
of conformity

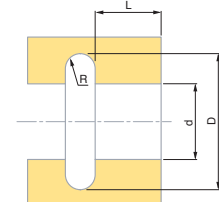
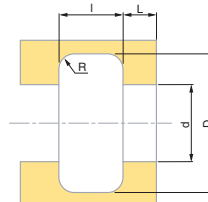
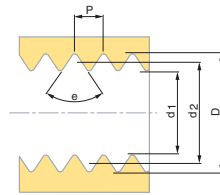
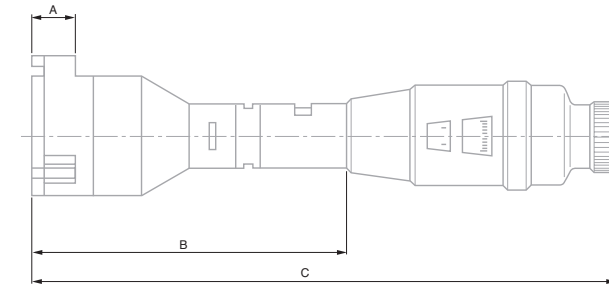
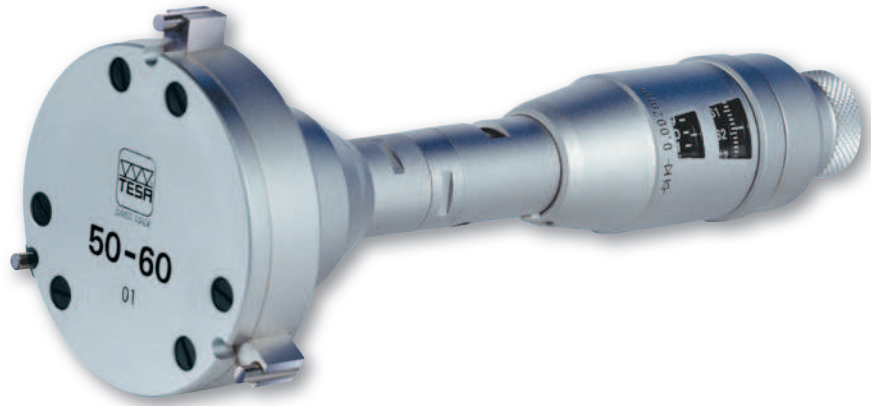
**||** 0,002 mm

**S** Supplied with 1 heat  
insulating sleeve  
(No. 00940020),  
2 keys (No. 00940001),  
1 screwdriver  
(No. 00862801).

## TESA TRI-O-BOR

Self-centring and self-aligning internal micrometers with 3-line contact with the part being inspected.

These micrometers measure trough holes, blind bores and short centring shoulders.



No						
	mm	µm	µm	A mm	B mm	C mm
00910005	15 ÷ 20	4	4	6	≥ 66	≤ 132
00910006	20 ÷ 25	4	4	6	≥ 66	≤ 132
00910007	25 ÷ 30	4	4	6	≥ 66	≤ 132
00910405	30 ÷ 40	4	4	10	≥ 70	≤ 138
00910406	40 ÷ 50	4	4	10	≥ 70	≤ 138
00910407	50 ÷ 60	5	5	10	≥ 70	≤ 138
00910705	60 ÷ 70	5	5	18	≥ 78	≤ 147
00910706	70 ÷ 80	5	5	18	≥ 78	≤ 147
00910707	80 ÷ 90	5	5	18	≥ 78	≤ 147
00911105	90 ÷ 100	5	5	18	≥ 78	≤ 147
00911106	100 ÷ 110	6	6	18	≥ 78	≤ 147
00911107	110 ÷ 120	6	6	18	≥ 78	≤ 147

### OPTIONAL ACCESSORY

**00940000** Extension of 150 mm for TESA TRI-O-BOR

